

# auta



**AUTÓNOMO**  
STANDALONE



REF: 721162

**ES** TECLADO + PROXIMIDAD MINI BK

**EN** KEYPAD + PROXIMITY MINI BK

# auta

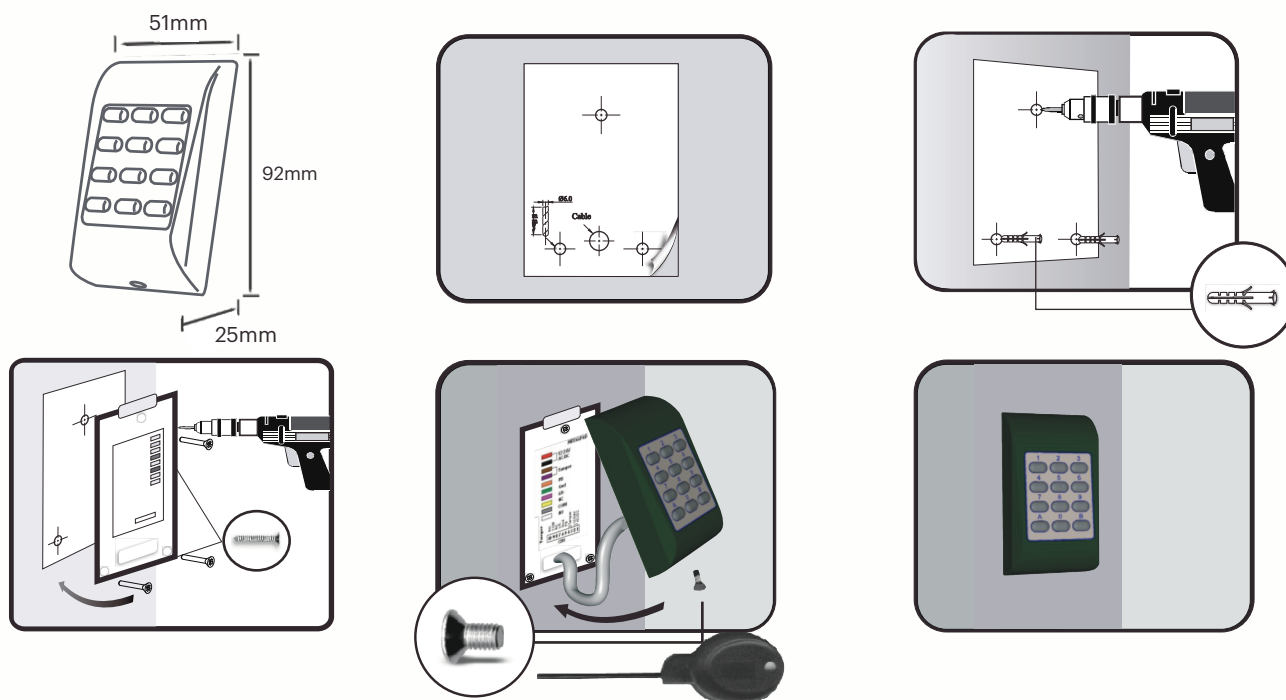
Bringing people together

## Características Features

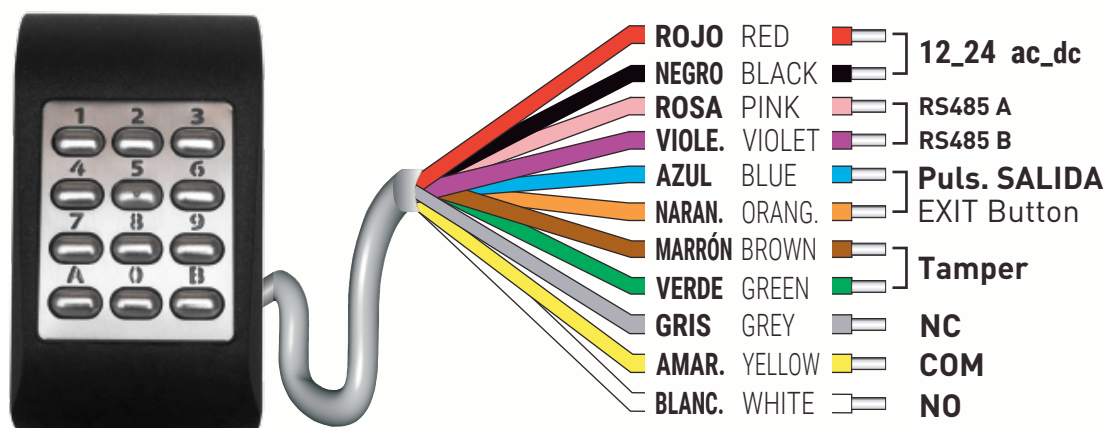
<b>Capacidad:</b>	1000 tarjetas_códigos	<b>ES</b>
<b>Salida</b>	1 relé - 2A/24 V CA/CC	
<b>Modo de entrada:</b>	Código, tarjeta, código y tarjeta	
<b>Tipo de lectura de proximidad:</b>	EM 4002/4100 y HID (125 kHz)	
<b>Distancia de lectura:</b>	hasta 4 cm	
<b>Longitud del código PIN:</b>	1 - 8 dígitos	
<b>Entradas con botón pulsador:</b>	1	
<b>Alimentación:</b>	12-24V CA/CC; max. 100 mA	
<b>Tamper:</b>	Sí	
<b>Tiempo de apertura:</b>	0 a 99 seg. o modo ON-OFF	
<b>Factor IP:</b>	IP65	
<b>Temperatura operativa:</b>	-20 °C a +50 °C, sin condensación	
<b>Seguridad:</b>	30 seg. de bloqueo después de 8 tarjetas o códigos PIN consecutivos no válidos	

<b>Capacity:</b>	1000 cards_codes	<b>EN</b>
<b>Output</b>	1 relay - 2A/24 V AC/DC	
<b>Entry mode:</b>	Code, card, code and card	
<b>Proximity reading type:</b>	EM 4002/4100 y HID (125 kHz)	
<b>Reading distance:</b>	Up to 4 cm	
<b>PIN Code Length:</b>	1 - 8 digits	
<b>Push button inputs:</b>	1	
<b>Supply:</b>	12-24V AC/DC; max. 100 mA	
<b>Tamper:</b>	Yes	
<b>Opening time:</b>	0 a 99 sec. or toggle ON-OFF mode	
<b>IP Factor:</b>	IP65	
<b>Operating Temperature:</b>	-20 °C to +50 °C, without condensation	
<b>Security:</b>	30 sec. blocked after 8 consecutive NO valid cards or codes	

## Montaje Mounting



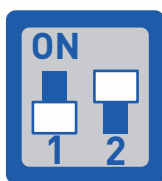
## Cableado Wiring



## Dipswitch y estados de los LED DipSwitch and LED's status

Fábrica  
Default

1- OFF 2- ON



**Iluminación permanente ON/OFF**  
Permanent Illumination ON/OFF

**Redefinición del código Maestro**  
Redefine Master Code



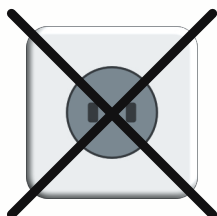
**Led VERDE**  
Estado Relé  
GREEN led  
Relay Status

**Led NARANJA**  
Pulsación de tecla y Menu  
Orange LED  
Key press and Menu

## Redefinición código MASTER Redefining MASTER code

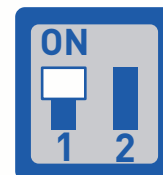
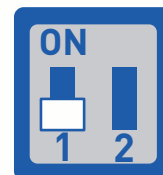
1

**Desconectar tensión**  
Switch OFF power



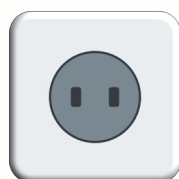
2

**Dipswitch 1 " ON "**  
DipSwitch 1 " ON "



3

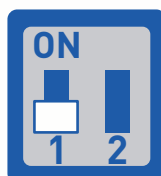
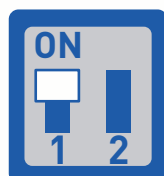
**Conectar tensión**  
Switch ON power



**Bip Bip... + Parpadeo led AMARILLO**  
Beep Beep... + YELLOW led blinks

4

**Dipswitch 1 " OFF "**  
DipSwitch 1 " OFF "



**Bip largo + Encendido led AMARILLO**  
Long Beep + YELLOW led ON

5

**Introducir**  
Introduce

**0000** + **Nuevo código MASTER**  
New MASTER code + **A** ( Bip Bip )  
Beep Beep + **B** ( Led AMARILLO OFF )  
YELLOW led OFF

