

auta

PULSADOR SENSITIVO BK
SENSITIVE PUSHBUTTON BK



REF. 721164

ESPECIFICACIONES FEATURES

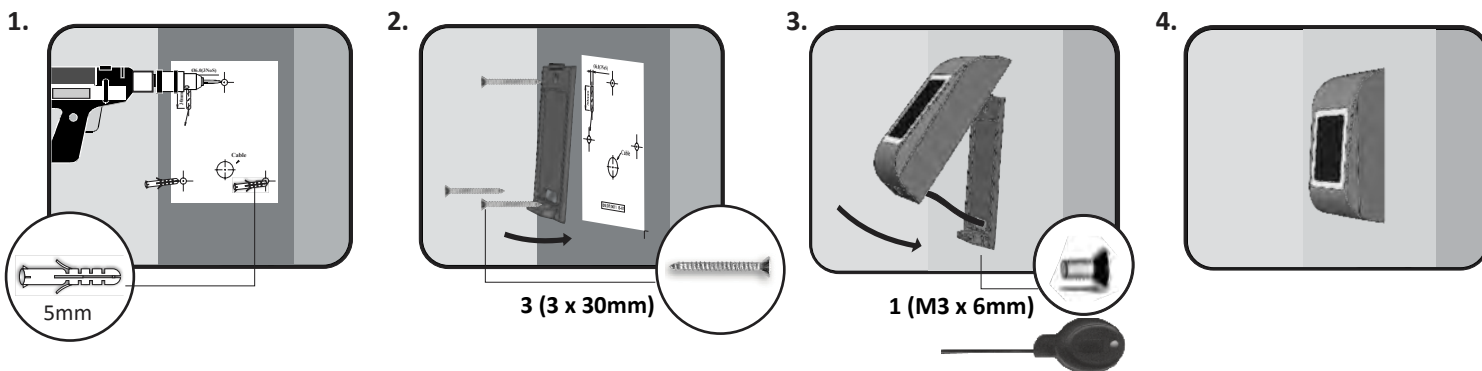
Voltaje de entrada: 12-24V CC; 15-24V CA
Consumo de corriente: max.65mA
Salida: Relé (2A; 24V DC / 120V AC)
Iluminación (LED): Normal - ROJO
 Operativo - VERDE
Temperatura de uso: -20°C hasta +50°C
Humedad: No condensado hasta 95%
Dimensiones (mm): 92L x 51l x 25A (Metal)
 92L x 51l x 27A (ABS)
Carcasa: Aluminio moldeado o ABS(negro).
Tapa frontal: Acero suave pintado
Protección: IP65

ES

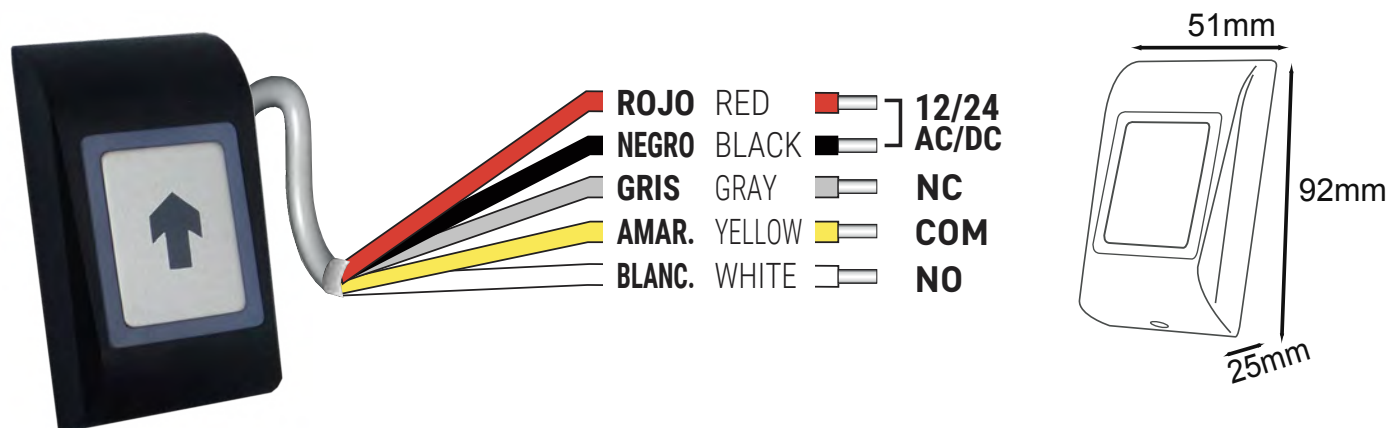
Input voltage: 12-24 VDC; 15-24 VAC;
Current consumption: max.65mA
Relay Output: 2A at 24V DC / 120V AC
Indicators-LED: Normal - RED
 Relay Operation - GREEN
Operating Temperature: -20° to 50°C
Operating Humidity: Non-condensing up to 95%
Dimension (mm): 92L x 51W x 25H (Metal)
 92L x 51W x 27H (ABS)
Housing: Die-cast Aluminium alloy or ABS
Touch Plate: Mild Steel Painted
Protection: IP65

EN

MONTAJE MOUNTING



CABLEADO WIRING



FUNCIONAMIENTO FUNCTIONING

| | Switch 1 | Switch 2 | DipSwitch |
|-------------|----------|----------|-----------|
| Mod. ON_OFF | ON | ON | |
| 10s | ON | OFF | |
| 5s | OFF | ON | |
| 3s | OFF | OFF | |

Iluminación ON
Backlight ON

Iluminación OFF
Backlight OFF