

xenia

DIGITAL



S1

REF: 736801



S2

REF: 736802



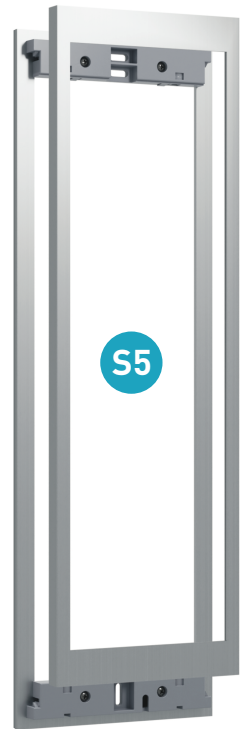
S3

REF: 736803



S4

REF: 736804



S5

REF: 736805

ES MARCO + PERFIL

EN FRAME + PROFILE

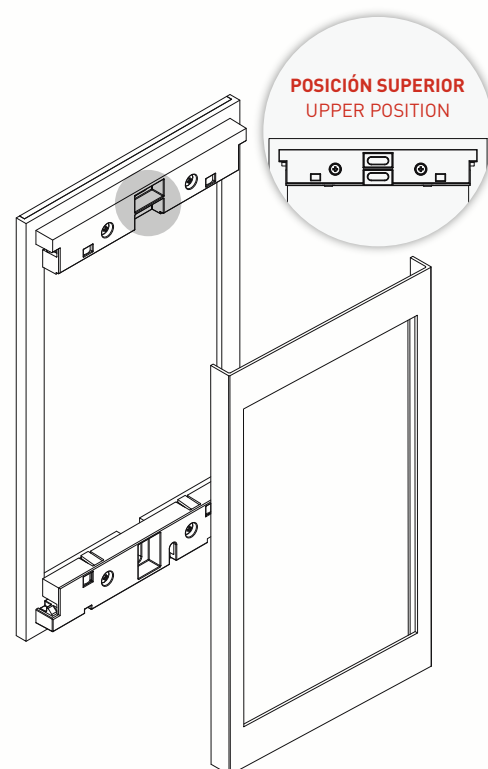
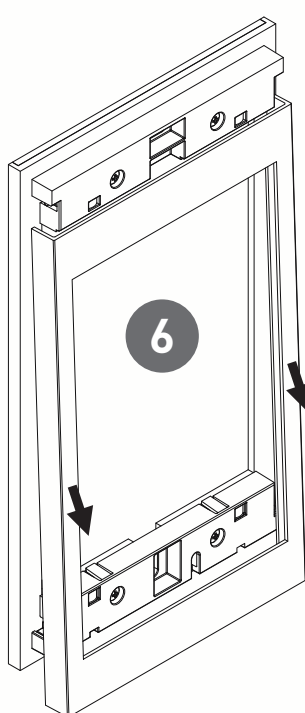
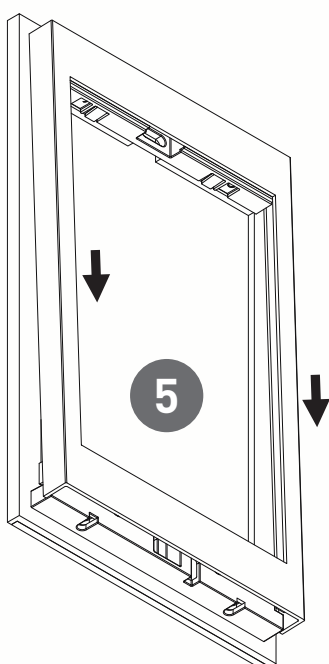
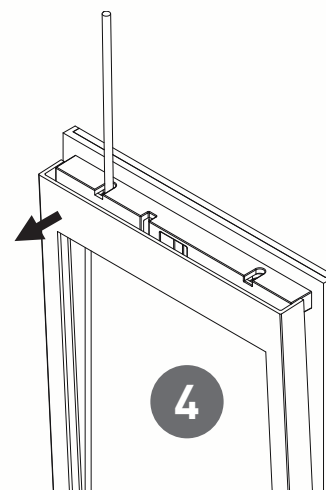
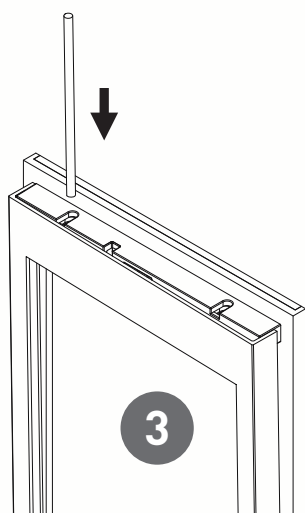
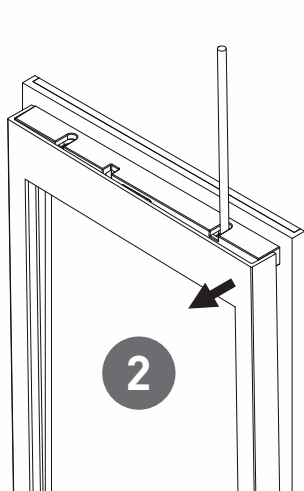
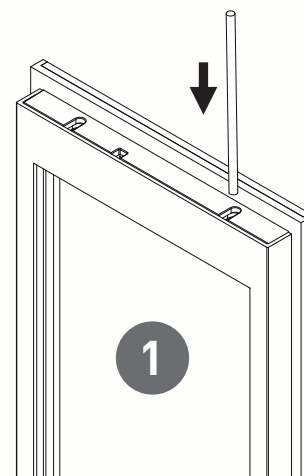
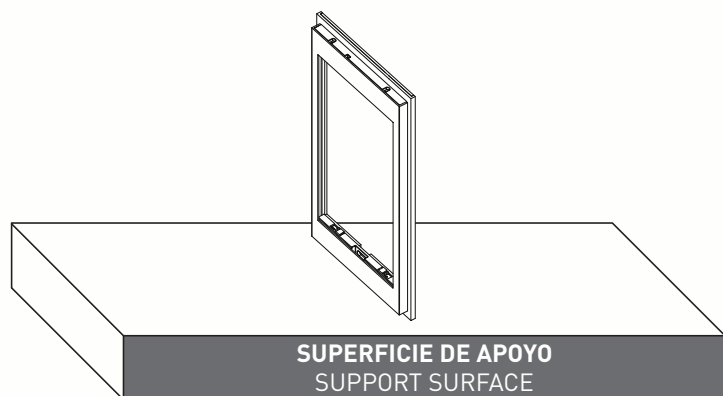
auta

Bringing people together

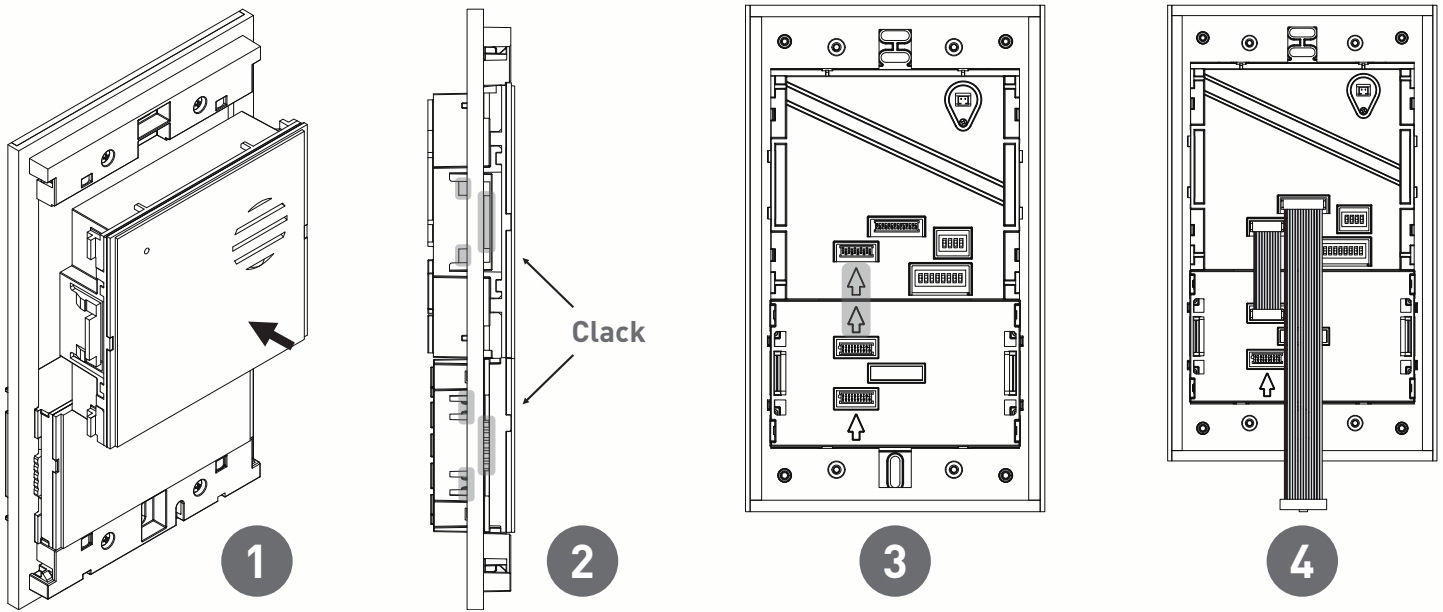
Desmontaje del perfil Profile disassembly

PARA UNA MAYOR COMODIDAD REALIZAR EL PROCESO USANDO UNA SUPERFICIE DE APOYO.

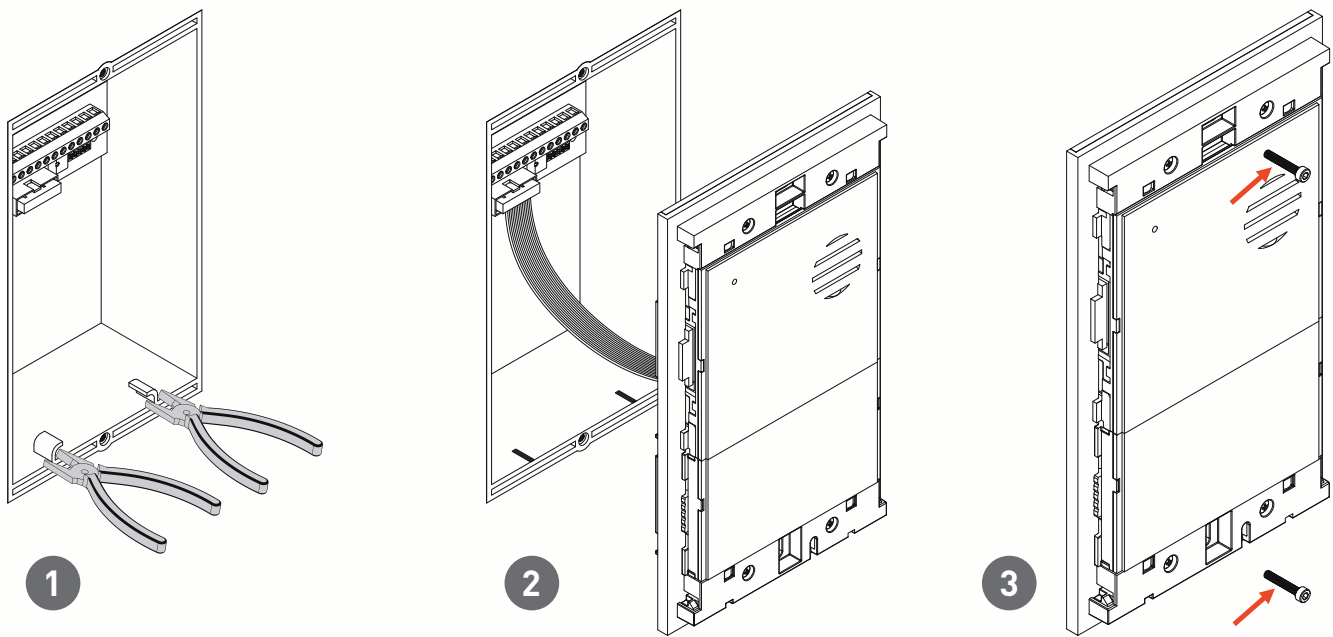
FOR GREATER COMFORT, PERFORM THE PROCESS USING A SUPPORT SURFACE.



Montaje de módulos y latiguillos Module and ribbons assembly

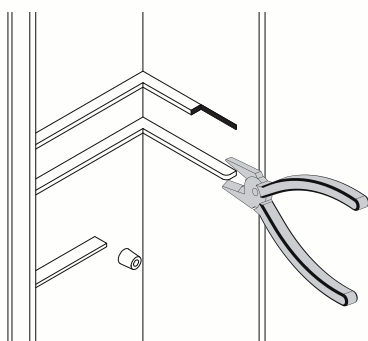


Conexión y montaje de placa Panel connection and mounting



No apretar en exceso los tornillos (max. 0.7 Nm)

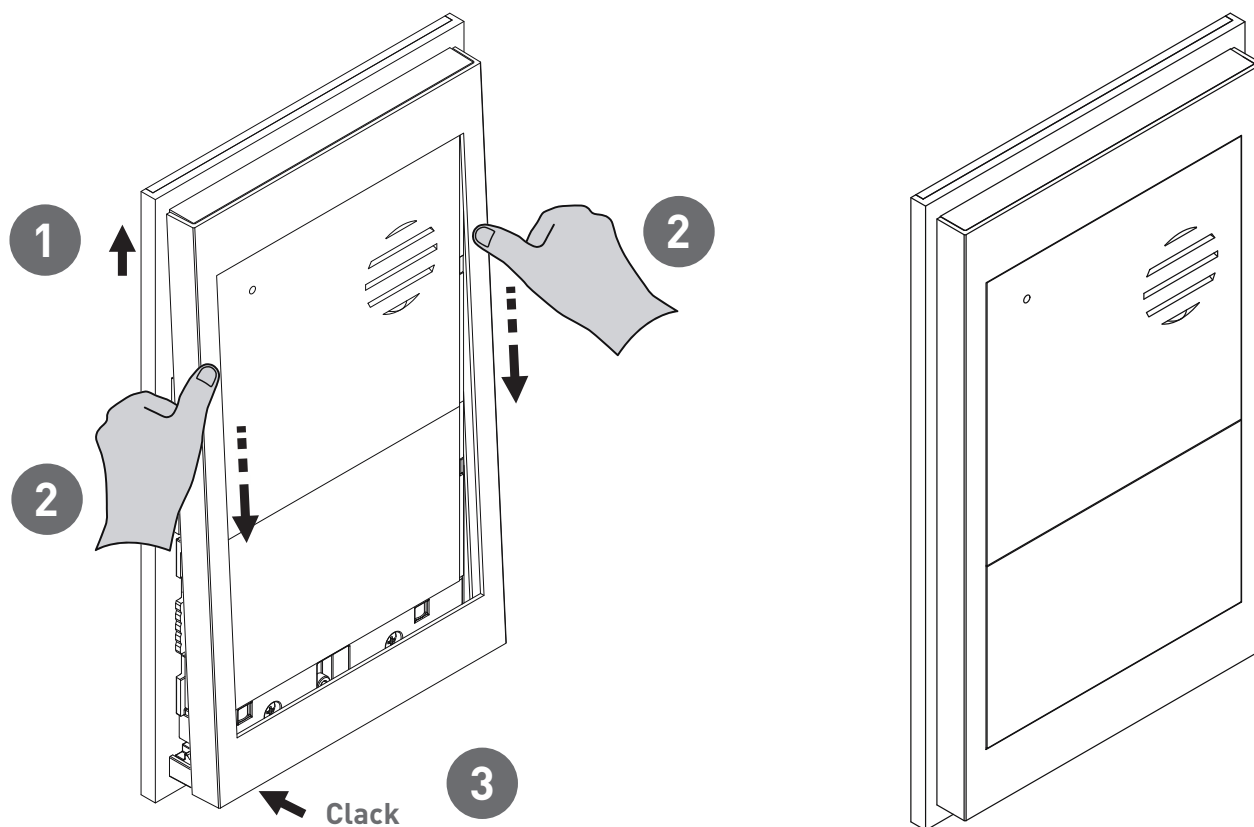
Do not over-tighten the screws (max. 0.7 Nm)



1.1

**SOLO CAJA DE EMPOTRAR SERIE 4 Y 5
ONLY SERIES 4 AND 5 MOUNTING BOX**

Montaje del perfil Profile assembly



NOTA

La conexión para los sistemas multi-placa será exactamente igual que el proceso descrito en este manual.

El latiguillo de las placas auxiliares se conectará en el módulo multi-placa.

NOTE

The connection for multi-panel systems will be exactly the same as the process described in this manual.

The ribbon of the auxiliary panels will be connected in the multi-panel module.