

# xenia

## DIGITAL



REF: 680061

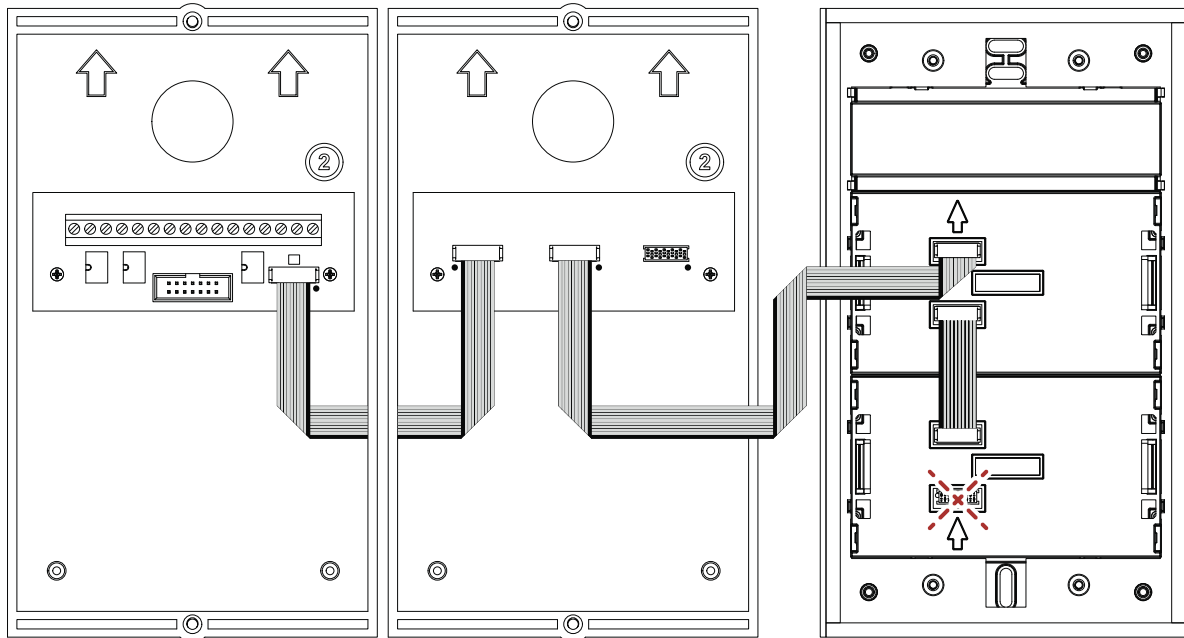
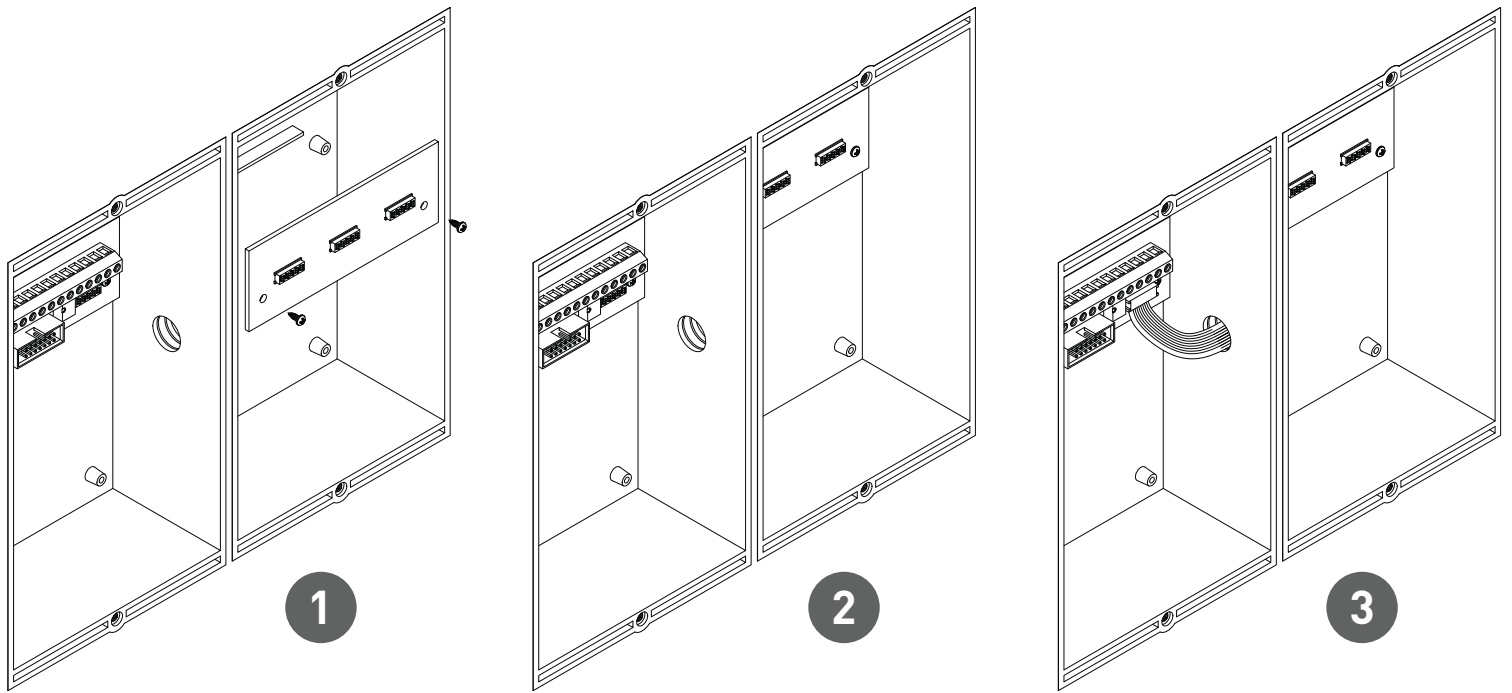
**ES** MÓDULO MULTI-PLACA

**EN** MULTI-PANEL MODULE

**auta**

Bringing people together

## Montaje Mounting

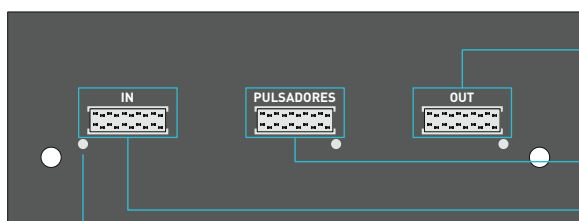


La conexión de la placa al módulo multi-placa se realizará SIEMPRE usando el conector libre SUPERIOR del conjunto de módulos.

The connection of the panel to the module multi-plate will always be performed using the TOP free connector of the set of modules.

4

## Descripción Description



● Posición cable rojo del conector  
Position of the connector red wire

● Conexión siguiente MÓDULO MULTI-PLACA  
Next MULTI-PANEL module connection

● Conexión Placa auxiliar Auxiliary Panel connection

● Conexión módulo AUDIO/VIDEO/CONTROL o módulo MULTI-PLACA previo  
AUDIO/VIDEO/CONTROL module or previous MULTI-PANEL module connection