

Auta Onex

IP SYSTEM

IP SYSTEM

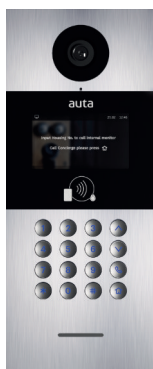
onex

Technology, usability and design in equilibrium

AUTA ONEX IP is a FULL IP system based on Class A IP technology. Its wide functionality, the careful design of its components and its advanced technology make it an innovative, versatile and attractive solution, with a perfect balance between technique and aesthetics. Easy to install, highly flexible and highly capable of devices, it incorporates HD video and digital audio for maximum quality communication.



System components



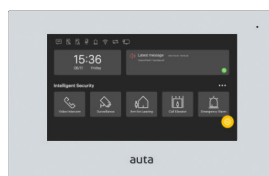
**IP AUTA ONEX
KEYPAD PANEL**

Entry panel with keypad and MiFare proximity reader



**IP AUTA ONEX
PUSH-BUTTON
PANEL**

Entry panel with 1 push-button and MiFare proximity reader



**IP AUTA ONEX
MONITOR 7''**

Monitor with 7'' touch screen



**IP AUTA ONEX
CENTRAL
GUARD PORTER**

10.1'' touch screen

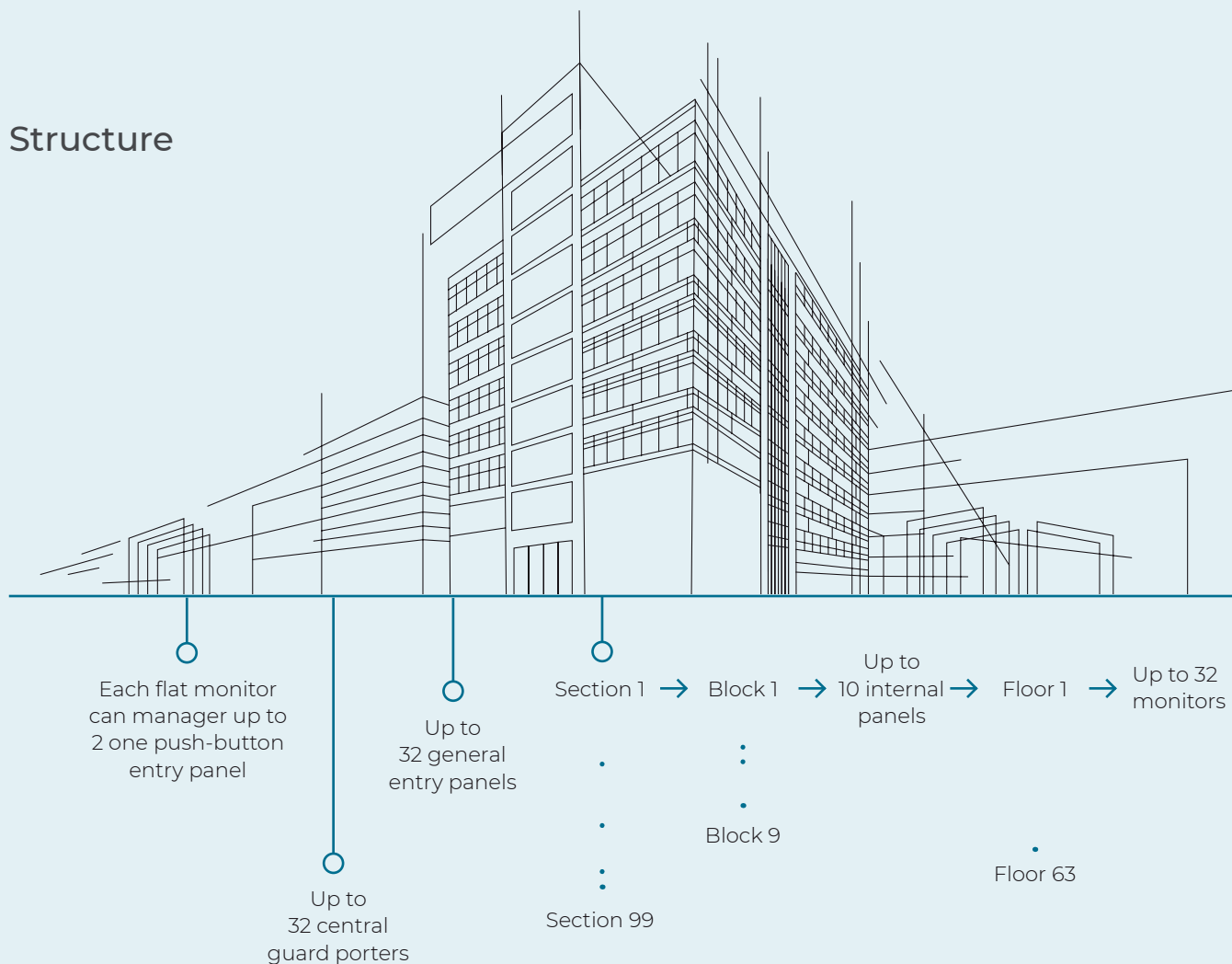
Features

- > IP address self-assigned to devices. Without any type of intervention by the user, in this way the installation is considerably expedited
- > Standard 48v PoE Compatible Devices.
- > Remote management Tuya SMART APP based on SIP protocol.
- > Multi-language system (Spanish, English, Portuguese and French).
- > Entry panels with great resistance to dust and water. Working range from -40° to +70°.
- > Automatic capture of images when making a call.
- > Intercommunication between monitors in the same flat.
- > Intercommunication between flats.
- > Possibility of redirecting calls to another point of the installation.
- > Broadcast system.
- > Control of door status when opening.
- > Proximity reader with MiFare technology included in the entry panels and central guard porter.
- > Lift control system.
- > Control of the flat alarm system.
- > Panic alarm.

Specifications

Wiring	UTP CAT5.6 + 2 power wires at the entry panel to supply the door opener
Nr maximum of sections	99
Nr maximum of blocks	Up to 9 blocks per section. Each block a maximum of 63 floors with 32 monitors each
Nr maximum of entry panels per block	10 per block
Nr maximum of flats	1.796.256
Nr maximum of central guard porters	32
Nr maximum of general entry panels	32
Maximum distance	Unlimited
Entry panel - flat privacy	Yes
Monitor settings	IP auto-assigned
Call structure	Nr block / flat - Nr section / block / flat
Voice / text message	Possibility of multiple messages to the flats (notifications, alarms, ...)
Access control integration	Yes. Built-in MIFARE readers. Wiegand protocol
CCTV integration	RTSP video stream from the entry panel. Viewing CCTV IP cameras from the monitor.

Structure



IP SYSTEM
onex

Components

MONITOR auta onex IP

Universal, minimalist and touch

Designed for a comfortable and dynamic use, the Auta Onex IP monitor presents a minimalist and functional design adaptable to any space, with a contemporary and elegant aesthetic concept. Compatible with **Tuya SMART APP**, have remote control of your home wherever and whenever you want.

7" screen with touch technology

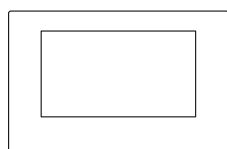
allows the user an easy and intuitive operation. Full DUPLEX hands-free communication system.

Monitors Auta ONEX IP allow feeding by Standard 48V PoE,

This means it uses standard 48V PoE switch power and no dedicated power supply is required.



In addition to answering calls to the home, it also allows you to manage missed calls, view image captures, read messages received by the administrator, view auxiliary cameras, notify alarms on the monitor / concierge and the possibility of managing the security system in the living place.



220



18

Measures in mm.

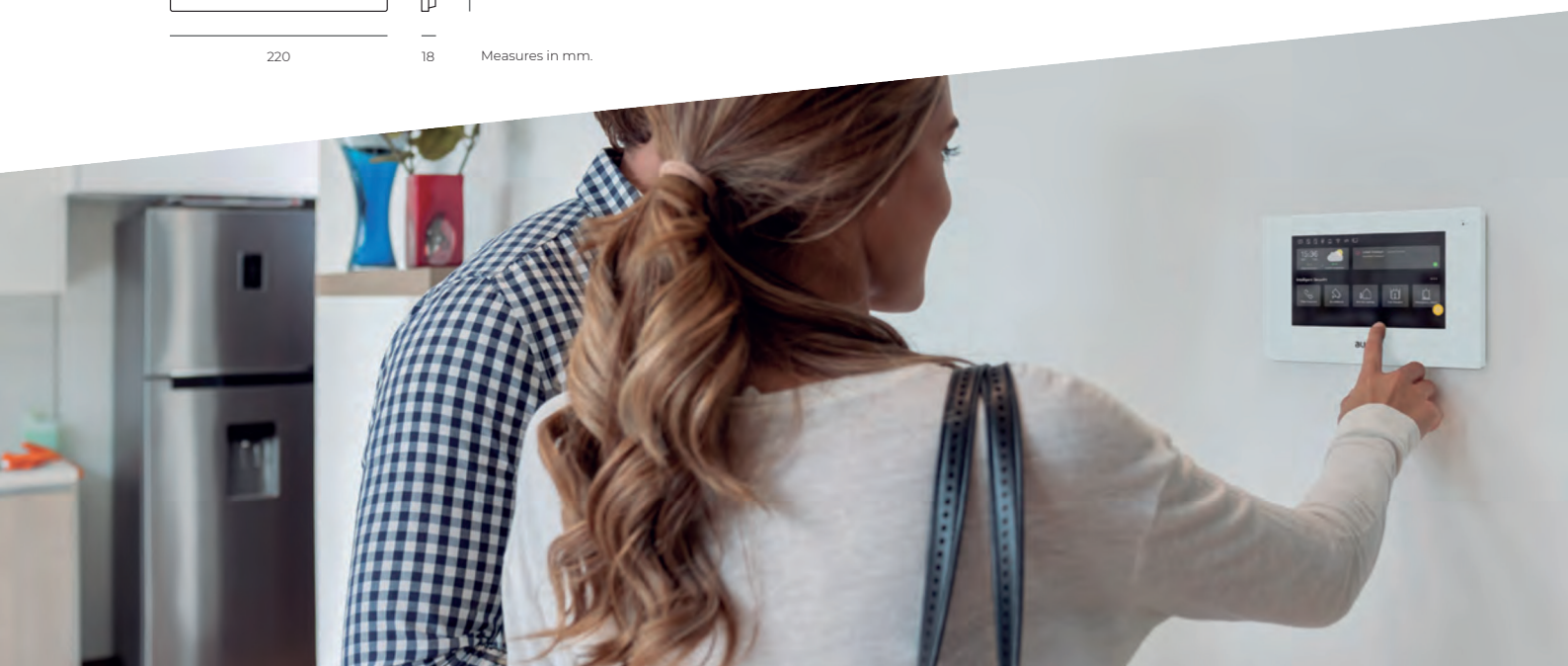
140



It allows intercommunication between flats, as well as the dissemination of messages within the same flat.



"Panic" function, allows you to send a panic call to central guard porter.



High technology and security

The Auta Onex IP keypad panel integrates the most innovative set of features, with a high definition camera, backlit digital keyboard and multiple advanced access control systems.



LCD screen

- > 4.3 "16:9 high contrast multifunction TFT screen.



HD color camera 2.0 Mpx

- > The camera has a high definition image with high brightness LED lighting.
- > Adjustable Up / Down, Right / Left 12°.



Digital keypad with high level of protection

- > Backlit keyboard with proximity sensor. As you approach the keys they light up.
- > High protection against dust and water.



Access control

- > Integrated MiFARE proximity access control reader.
- > Access control by numeric code.
- > Access control via QR code.
- > Door status control with alarm notification.



Unibody aluminum entry panel

Dimensions:
Panel: 148,5 x 363 x 47 mm
Mounting box: 132 x 340 x 50 mm

IP SYSTEM
onex

Components

ENTRY PANEL
auta onex IP

PUSH-BUTTON

An attractive design and resistant

The Auta Onex IP push-button panel combines performance, versatility, modernity and aesthetics, with extra protection features against external elements and cutting-edge technological accessories.



Backlit push button
and card holder.

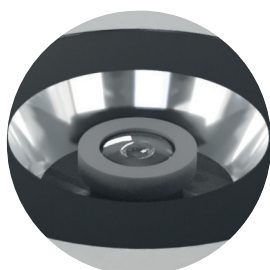


High protection
against dust and
water.



Access control

> Built-in MIFARE readers.



HD color camera
0,3 Mpx

> The camera has a high definition image with high brightness LED lighting.

> Adjustable Up / Down, Right / Left 12°.



Unibody aluminum entry panel

Dimensions:

Panel: 120 x 194 x 44 mm

Mounting box: 100 x 175 x 40 mm



CENTRAL GUARD PORTER auta onex IP



It has a function to open all the doors of the complex in case of emergency.

Centralized and global control

The Auta central guard porter Onex IP is a desktop device that allows communication with any entry panel or flat other functions for a comprehensive and simple control of access security.



The central can receive and control the status of the neighborhood community, receiving alarms, calls. It also allows communication with other centrals in the facility.

Vigilance and security

Thanks to its user interface, it is possible to see any missed call or panic call and call back to the flat.



Ergonomically designed for friendly use, the Auta Onex IP guard porter integrates a **large 10.1" touch screen and capacitive buttons** to interact with it intuitively.

Total control

Possibility of controlling Auta Onex IP panels and CCTV cameras integrated in the installation.

Communication easiness

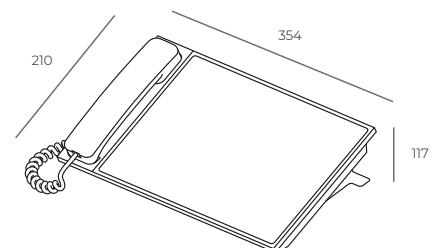
DUAL audio system, allows handsfree and handset communication.



Access control user management. Built-in MiFARE reader.



Built-in Pinhole camera.



Measures in mm.



The Auta Onex IP system integrates the function of managing online access to a home from mobile devices through Tuya SMART APP for iOS and Android, available on Google Play and Apple Store for free.

The application allows you to receive calls to a building remotely, interact through street panels or guard units and approve access with ease and security, without the need for complex installations or additional devices.

Connect the Auta Onex IP monitor, link the monitor to the Wi-Fi network, download the Tuya SMART APP, enter your credentials and start enjoying the freedom of a new connected, mobile and easier era.

FREE APP

Available for iOS and ANDROID



IP SYSTEM onex



ONEX IP KEYPAD
PANEL



PUSH-BUTTON
ONEX IP PANEL



ONEX IP 7"
MONITOR



ONEX IP CENTRAL
GUARD UNIT



ONEX IP LIFT
CONTROLLER

REF.

660010
660011
751005
751004
760101
730197

DESCRIPTION

ONEX IP KEYPAD ENTRY PANEL
ONEX IP PUSH-BUTTON ENTRY PANEL
ONEX IP 7" MONITOR
ONEX IP 7" WI-FI MONITOR
ONEX IP CENTRAL GUARD UNIT
ONEX IP LIFT CONTROLLER

auta